

ELECTROCOMP

Complete solutions. **Do it better.**



L I N E C A R D



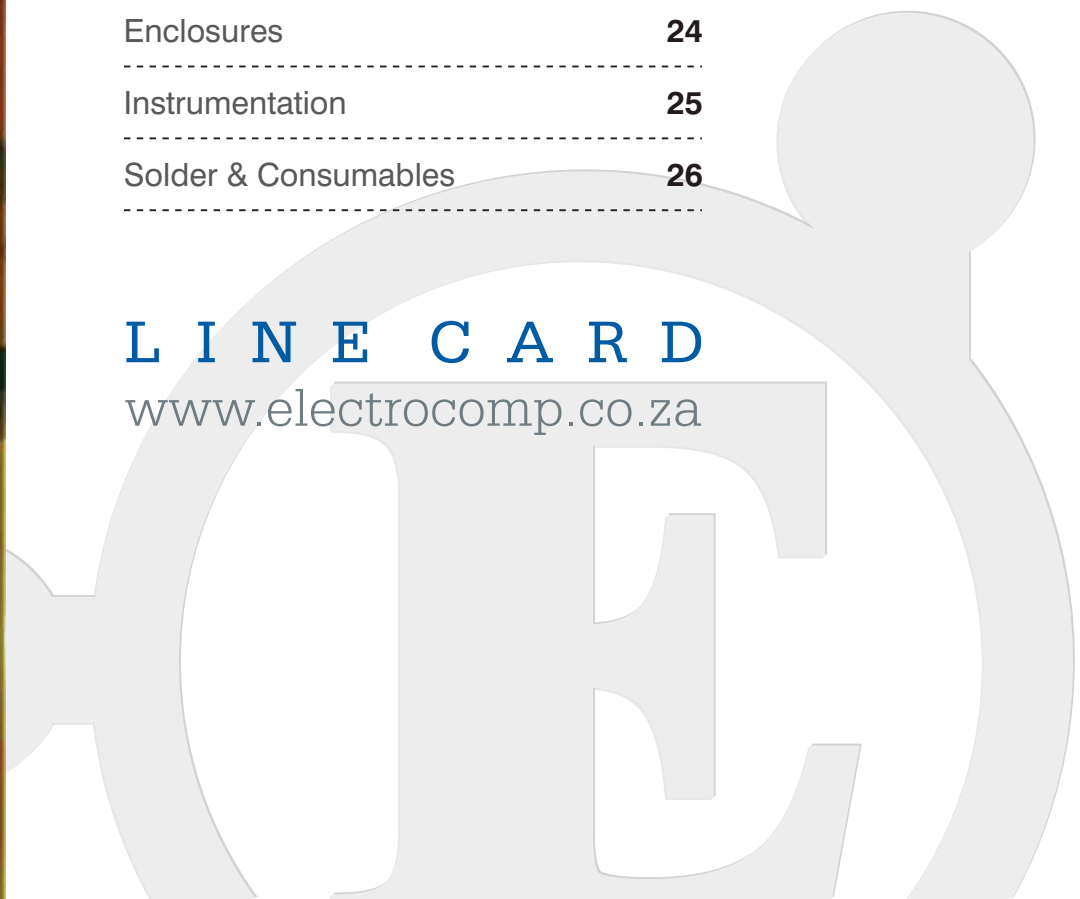


I N D E X

Semiconductors	2
Passives	7
Electromechanical	13
Opto Electronics	18
Wireless	20
Batteries	23
Enclosures	24
Instrumentation	25
Solder & Consumables	26

L I N E C A R D

www.electrocomp.co.za





www.infineon.com



Automotive ICs

- Embedded Power ICs
- DC/DC Converter (Automotive)
- Motor Drivers (Automotive)
- Infineon® Auto LED Driver
- Linear Voltage Regulators for Automotive Applications
- Powertrain ICs
- Restraint System ICs
- Smart High- and Low-Side Switches
- Transceivers
- Vehicle Stability ICs Braking (ASP/ESP)

Discretes & Standard Products

- MOSFETs
- IGBTs
- Bipolar Transistors
- Diodes
- DC/DC-Converters (Industrial)
- Industrial Transceivers
- Linear Voltage Regulators for Industrial Applications
- PROFETS™ and Mini-PROFETS™: Smart High Side Switches
- RF

ESD & EMI Protection Devices and Filters

- Audio Line Interfaces
- General Purpose
- High Speed Data Interfaces
- Flash Memory Interfaces
- Wireline Telecommunication
- RF Antenna ESD Protection

Interface Devices

- ESD & EMI Protection Devices and Filters
- HITFET™, TEMPFET™ - Smart Low-Side Switches
- HV Gate Driver ICs
- Industrial Transceivers
- Intelligent Interfaces via RF Technology
- Isolated I/O ICs
- Protected High Side Switches
- Transceivers
- Wireless Control

Lighting ICs & LED Drivers

- Off-line LED Driver
- LED Drivers for Automotive
- LED Driver for Outdoor Lighting & Indoor Lighting
- Smart Ballast Control ICs for Fluorescent Lamp Ballasts

Microcontrollers

- 32-Bit Microcontrollers
- 16-Bit Microcontrollers
- 8-Bit Microcontrollers
- Companion IC family
- Development Tools, Software and Kits
- Embedded Software Solutions
- Safety Products PRO-SIL™

Power Management ICs

- AC/DC
- DC/DC
- HV Gate Driver ICs
- Industrial Transceivers
- LED Drivers for General Lighting
- Linear Voltage Regulators for Industrial and Consumer Applications
- Motor Drivers (Automotive)
- Motor Drivers (High Power)
- Smart Ballast Control ICs for Fluorescent Lamp Ballasts

Power Modules & Discs

- SmartPIM and SmartPACK
- MIPAQ™ Modules
- IGBT Modules
- HybridPACK™ Modules Intelligent Modules (CiPoS™)
- Bridge Rectifier / AC-Switches
- Thyristor / Diode Modules
- Thyristor / Diode Discs
- Stacks and Assemblies

RF

- RF MMIC
- RF Switches
- RF Transistors
- RF Antenna ESD Protection
- GPS Front-End Components
- RF MOSFET
- RF PIN Diodes
- RF Varactor Diodes
- RF Mixer + Detector Schottky Diodes
- High Reliability Discretes
- Intelligent Interfaces via RF Technology
- Cellular RF Transceiver
- RF Power
- Wireless Control

Sensors & Wireless Control

- Pressure Sensors
- Magnetic Sensors
- Tire Pressure Sensors
- Wireless Control
- Radar Solutions for Automotive

Silicon Carbide Power Products**Wireless Communication Products**



www.diotec.com



- Standard rectifiers
- Fast switching rectifiers
- Ultrafast switching rectifiers
- Superfast switching rectifiers
- Schottky Barrier Diode
- Zener diodes
- Transient Voltage Suppressor diodes
- Current limiting diode

- Small Signal Diodes
- Bridge rectifiers, single phase
- Bridge rectifiers, three phase
- High voltage rectifiers
- Arrays
- Bipolar Transistors
- Field Effect Transistors
- Diacs



www.nisshinbo-microdevices.co.jp



General Purpose Linear

Operational Amplifiers

- Rail to Rail Input/Output
- Rail to Rail Output
- Precision
- Hi-Speed/Wide Band
- Low Noise
- Low Operating Current
- Low Operating Voltage
- J-FET Input
- High Voltage

Comparators

Motor ICs

- Stepper Motor

Communication

Communication ICs

GaAs MMICs

- Amplifier IC ,Switch IC

Display Drivers

LCD Driver

VFD Driver

LED Driver

Optoelectronic Devices

General Purpose Linear

Power Supply ICs

- LDO ,3-Terminal Voltage Regulator
- Reset IC
- Shunt Regulator
- Switching Regulator IC
- Battery Charger IC
- Charger Pump IC

Audio / Video

Audio

- Audio Amplifier ,Class D Amplifier
- DSP (*Digital Signal Processor*)
- Audio Processor
- Electronic Volume
- Audio Switch

Video ICs

- Video Amplifier
- Video Switch

Others

Quartz Crystal Oscillator ICs

ASSP (*Others*)

A/D Converters

Analog Switch ICs

Microprocessor Peripheral ICs


www.ftdichip.com


Specialists in converting legacy peripherals to Universal Serial Bus (USB). They offer the easiest route to USB migration by combining USB-Serial (USB-RS232) and USB-FIFO silicon solutions with their ready-to-go royalty free USB drivers. FTDI's "total" solutions offer reduced development and debug costs and a fast time to market.

IC's

Vinculum Family – USB Host/Slave Controllers
FT Series IC's – USB Slave Converters

Cables

USB TTL Serial
USB RS232

USB RS422
USB RS485
USB to USB

Modules

Range of PCB boards and sub-assemblies based around FTDI ICs. The modules are available in a range of formats to support various applications. The range consists of modules to carry out basic prototyping of USB based designs to modules which can be integrated to provide USB connectivity within finished product designs.

USB RS232/422/485 Modules

Range of modules supporting conversion from USB to a range of commonly used serial interfaces such as RS232, RS422, and RS485. Modules are based on the FTDI USB to serial converter ICs and support multiple channels.

DLP Modules

FTDI also supply and distribute a range of connectivity modules developed by DLP Design. Many of the products are based around FTDI USB ICs and offer connectivity to RF/RFID, temperature sensors, humidity sensors, MCUs, I/O interfaces as well as offering USB adapters and development boards.


www.vti.fi


Accelerometers

- Automotive digital
- Instruments
- Automotive analog
- Consumer electronics

Gyroscopes

- Combined Gyroscope and Acceleration Sensors
- Industrial Gyroscopes
- Consumer Gyroscopes

Inclinometers

- Inclinometers
- Inclination modules and sub-assemblies

Pressure Sensor Elements



SENSIRION
THE SENSOR COMPANY

www.sensirion.com



Humidity Sensors (RH&T)

First digital humidity sensor for precise, reliable and cost-effective humidity measurement and humidity control in a wide variety of OEM applications such as consumer goods, automotive and HVAC applications.

Liquid Flow Sensors

High precision liquid flow sensors and liquid flow meters with measurement ranges down to nanoliters per minute. Designed for medical devices, HPLC, biotech and laboratory applications.

Mass Flow Meters & Controllers for Gases

Mass flow meters and mass flow controllers for accurate and fast measurement and control of gas flow. Successfully used in different OEM applications (e.g. medical devices, analytical instruments, etc.)

Differential Pressure Sensors

Differential pressure sensors for gases. Measures accurately and offset free down to very low rates of differential pressure. Designed for demanding medical and HVAC applications.



SHOULDER

www.shoulder.cn



- Saw filters
- Saw resonators
- Crystal oscillators
- RF modules
- WiFi modules

Passives



www.alconelectronics.com



- Film Capacitors
- Electrolytic Capacitors
- Snubber Capacitors



www.arcol.co.uk



- Aluminium Housed Resistors
- Thick Film Power Resistors



www.bourns.com



- Trimmers and SMT Trimmers
- Resistor Networks, Mini Nets, RC Networks
- Chip Resistors and Arrays
- Dials and Encoders
- Panel controls
- Potentiometers - Linear motion and Slide motion
- Precision Potentiometers
- Pressure Sensors
- Inductive Components
- Modular Battery Contacts
- Multifuse Circuit Protection
- TISP - Telecom Overvoltage Protectors



www.ceccoils.com



- Coils
- Chokes
- EMI Suppressors
- Inductors
- Toroidal Coils
- Power Adaptors
- Line Filters
- Transformers and Slide motion





www.centronic.co.uk



- Electro Optics
- Radiation Detectors
- Geiger Müller Tubes
- Semiconductor Radiation Detectors
- UV Light Measurements
- Vision Engineering
- Radiation Tolerance



www.epcos.com



Capacitors

- Aluminum Electrolytic Capacitors
- Tantalum Capacitors
- Ultracapacitors
- Film Capacitors
- Power Capacitors

SAW Components

- SAW Components for TV and Audio applications, such as intercarrier & Nyquist filters
- SAW Filters as surface mount devices for mobile phones, multimedia and automotive electronics
- Resonators, clock recovery filters and band pass filters for telecommunications
- Low pass filters, duplexers and modules for mobile phones

Ceramic Components

- Piezo actuators
- Multilayer Ceramic Capacitors
- Thermistors
- Varistors
- Surge Arresters

Ferrites & Inductors

- PM/EP cores for telecommunications and industrial electronics
- E/U Cores for consumer electronics, Information Technology and automotive electronics
- Toroids for electromagnetic compatibility (EMC) and LAN applications
- Accessories for ferrite cores
- Inductors / Inductive ferrite components
- RF Chokes
- Chokes and Filtersors



High & Low Corp.

www.hal.com.tw



- EMI/RFI Filters



www.hitano.com.tw



- | | |
|---|---|
| <ul style="list-style-type: none"> • Electrolytic Capacitors • Ceramic capacitor • Disc Type • Disc Type High Voltage including 2KV-15KV • Multilayer Conventional & Chip Electrolytic • Capacitors • Standard Miniture Radial | <ul style="list-style-type: none"> • Standard Miniture Axial • High Temperature 105DEG • Ultra Miniture Radial • Low Leakage Radial • Non Polarized Radial & Axial • SNAP-IN Type • Low Impedance Type |
|---|---|



www.htr-india.com



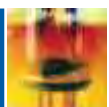
- Wire wound resistors
- Surface mount resistors
- Fusible type resistors



www.lcap.ch



- | | |
|---|---|
| <ul style="list-style-type: none"> • High Voltage capacitors • Power capacitors • Precision capacitors | <ul style="list-style-type: none"> • Electrolytic capacitors • Impregnated capacitors |
|---|---|



NEOSID
Expertise in components

www.neosid.de



- Special ferrites
- Chokes, fixed value inductors
- Automotive electronics
- Filters, Coil assemblies, Thermoplastic parts
- SMD Filters, Coils, Fixed value inductors

HK Film Capacitor

www.filmcapacitor-st.com



- Power Film Capacitors
- Snubber Capacitors
- RC Networks
- AC Capacitors
- Motor Control Capacitors

TEMWELL
RF Filter Design Expert Since 1994

www.temwell.com.tw



Helical Band Pass Filter

- RF Band Pass Filter for Second IF Helical Filter
- RF Band Pass Filter for P25 Portable Radio 380-520M/ 800-900M
- RF Band Pass Filter for VHF UHF Wireless Microphone
- Cellular & Wi-Lan & GPS
- RF Band Pass Filters for 138-174/ 380-520M Two Way Radio (*Portable Transceiver*)
- VHF UHF Band Pass Filters For Transmitters & Receivers

TE
connectivity

www.te.com



- Filters
- Passive Components



www.vacuumschmelze.com



- Permanent Magnets and Plastic Bonded Magnets
- Magnet Systems
- Materials
- Parts
- Cores
- Inductive Components



www.vishay.com



- Film**
- Wire Wound**
- Heating**
- Lamp**
- Noise Suppressors**

Ceramic Capacitors

- Disc type (50, 100 & 500V)
- Disc type high voltage 1-6KV
- Leaded multilayer radial & axial
- Miniature plate
- Safety caps

Film Capacitors

- General purpose (*dipped & boxed*)
- Starter caps
- Precision
- Interference suppression
- AC & pulse

Electrolytic Capacitors

- SMD
- Radial & axial (*including high temp*)
- Solid aluminium
- Large can (*solder & screw terminals*)
- Ac motor start
- Energy storage (*super caps*)

Trimmer Capacitors

- General purpose
- Consumer
- Professional (*teflon foil*)

Linear Resistors

- Fixed resistors (*leaded & SMD*) (.4, .5, .6 & 1W)
- Precision (.05, .02, .01, .5, .25 & 1%)
- High voltage metal film (1, 2 & 3W)
- Wirewound (1, 3, 4, 5, 7, 10, 15 & 20W) 1% & 5%

NTC & PTC Thermistors

- Temperature sensing
- Overload protection
- Picture tube degaussing
- Temperature protection
- Overvoltage protection
- Humidity sensing

Zinc Oxide Varistors Control Potentiometers

- Carbon 12 & 17mm
- Cermet 17 & 23mm
- Cermet & carbon preset high voltage focus units



YAGEO

www.yageo.com



- Leaded Resistors
- Chip Resistors
- Chip Capacitors
- Resistors + Capacitor arrays
- Chip Resistor arrays

Electromechanical

Amphenol

www.amphenol.com



- Antennae
- Filtered connectors
- Circular connectors
- D-type connectors
- Smart Card connectors
- Flat Flex Solutions
- RF connectors
- Fibre optics

**CHAMPION
ELECTRONICS**

www.champelec.com



- Elevated Height above board
- Multilayer board Sockets
- TO Series machined
- Zig-Zag inline strips
- PGA Sockets
- Stamped pin Sockets
- Board to Board Connectors

COOLTRON

www.cooltron.com



- DC Brushless Fans, frame sizes from 20-172mm, thickness from 6-55mm, DC voltages 3.3/5/12/24/48V
- DC Blowers, various designs and DC voltages 3.3/12/24/48V for different applications
- AC Fans and Blowers, AC 110, 220V, 115/230V dual voltage (available for some models)
- Fan accessories, guards/filters/power cords

dBase

www.dbace-buzzer.com.tw



- Piezo Buzzer
- Piezo Transducer
- Piezo Element
- Magnetic Buzzer
- Magnetic Transducer
- SMD Buzzer/transducer
- Speaker





www.essentracomponents.com



- Circuit Board Hardware
- Card Guides & Pullers
- Rivets, Screws, Washers & Nuts
- Motion Control Bumpers & Feet
- Fan Accessories
- LED Hardware
- Insulators
- Cable Ties & Accessories
- Cable Management
- Fiber Management
- Grommets, Bushings & Cable Glands



www.degson.com



- PC Din Rail Terminal Block
- MK Din Rail Terminal Block
- WS Din Rail Terminal Block
- Plug-in Terminal Block
- PCB Screw Terminal Block
- Transformer Terminal Block
- PCB Spring Terminal Block
- Feed Through Terminal Block
- Barrier Terminal Block
- Interface Module
- Through-wall Terminal Block
- Circular Connectors



www.fischerelektronik.de



- Heatsinks
- Connectors
- Semiconductor Mounting Parts
- Thermal Transfer Compound
- 19" Racking
- Computer Accessories
- Testboards & Test & Measuring Equipment
- Mica & Silicone Wafers



www.gct.co



- SIM Card Connectors
- USB Connectors
- USB Type-C Charging Connectors
- Waterproof Connectors
- Board to Board Connectors
- Memory Card Connectors
- Flat Flex Cable & Connectors
- DC Power Jacks
- Modular Jacks
- Lighting Connectors
- Custom Overmolded Cable Assemblies
- Custom Connectors



Industrias Lorenzo, S.A.

www.industrias-lorenzo.com



Parts and accessories for vending, gaming and amusement.

MENTOR
INNOVATIONS FOR THE FUTURE

www.mentor-bauelemente.de



Front panel elements

molex

www.molex.com



Connectors

- FFC/FPC/Wire Trap Connectors (*down to 0.3 mm pitch*)
- Micro and Nano-miniature Connectors
- Slimline D-sub Connectors (*also SMD*)
- Modular Interconnect Systems
- Single & Dual Row, 2.0 mm & 2.54 mm
- Data Connectors
- DIN 41612 Connectors
- Modular Jacks and Plugs (*also SMD*)
- Sockets and Edge Connectors
- SIMM, DIMM Sockets
- IC Sockets, Economy Type: Side wipe SIL, DIL, PLCC
- PCB Connectors, 0.1" and 0.2" pitch
- Board-to-Board
- Wire-to-Board and Wire-to-Wire
- Input/Output Connectors
- High Power Connectors
- Industrial (*circular*) Connectors



www.huaguan-relays.com



- Signal relays
- Automotive Flashers
- Miniature PCB relays
- Latching relays
- Automotive relays
- Relay sockets



www.panasonic-electric-works.com



- Electromechanical Relays
- PhotoMOS Relays
- Solid State Relays
- Switches
- Connectors
- Built in Sensors



www.phoenixcontact.com



- Screw Contact Terminal Blocks
- Spring Cage miniature Terminal Blocks
- Spring Cage Compact Terminal Blocks
- Headers For Spring Cage Miniature Terminal Blocks
- PC terminal Blocks PTSA
- Pin Strips PSA
- Fibre Optic Printed Terminal Blocks



www.sew.com.tw



- Panel Meter



www.te.com



- Circuit Protection Devices
- Connectors & Connector Components
- Identification Products
- MID Technologies
- RF Antenna Products
- Relays for telecommunications, automotive & industrial applications
- Relays, Switches and Sensors
- Tooling Products
- Touch Systems
- Tubing & Harnessing Products
- Wire, Cable, Cable Assemblies
- General Purpose Relays
- PCB Relays
- Power Relays
- Solid State Relays
- REED Relays
- Circuit Breakers and Contactors



www.weco.ca



- Connector blocks
- Modules



www.weidmuller.com



P.C.B. Connectors and Terminals



www.winslowadaptics.com



- ADAPTICs
- Sockets
- Connectors





www.csbright.com



LED's -Conventional, SMD 7 Segment, DotMatrix, Alphanumeric



www.datavision.com.tw



- Character LCD modules - from 16ch x 1 to 40ch x 4
- Graphic LCD modules - dot matrix from 128 x 16 to 640 x 240



www.densitron.com



OLEDs

- Active Matrix (AMOLED)
- Passive Matrix (PMOLED)

TFTs

- TFT Displays
- Sunlight Readable TFT
- UART/MPU I/F
- TFT Kits
- TFT - AMOLED Compatibility

Touch Screens

- ITO Projective Capacitive
- Wired Projective Capacitive
- Surface Capacitive
- 5-Wire Resistive
- 4-Wire Resistive
- SAW
- Glass Resistive
- Touch Controllers
- Optical Bonding

Development & Evaluation

- OLED Video Dev Kits
- OLED Eval Kits
- OLED Example Projects

Monochrome

- 1U/2U Format LCD
- Mono Graphic LCD
- Alphanumeric
- 7 Segment Glass
- Electro Luminescent

Engineering Design

- Industrial Design
- Software
- Plastic Tooling
- Plastic Moulding
- Metalwork
- PCB Subcontract
- Assembly

Knowledge Base

- Screen Enhancements
- Environmental Enhancements
- Display Technology
- Controller ICs
- Backlights, Filters
- Interfaces

EVERLIGHTwww.everlight.com**Visible LED Components**

With a wide range of SMD LED, through-hole and assembly LED Lamps and Flash LED, EVERLIGHT contributes to the world's growing demand for reliable solutions for general illumination purposes, ambient lighting, backlighting, automotive, signage and traffic signal applications. Also for complete LED backlighting solutions, EVERLIGHT features a comprehensive portfolio of LED components.

Lighting Solutions

From highly productive greenhouses and modern offices to the nightly streets in Europe, Asia or North America: wherever a strong boost in efficiency and economic life-time is requested, EVERLIGHT's high performing LED fixtures and retrofits are first choice. Especially when design follows function and performance in such an appealing way.

Infrared LED, Sensors, Couplers

EVERLIGHT infrared products can be found in countless unexpected applications around you. Whenever and wherever perfect control and highest precision is required. Designed to make our world better, safer, more comfortable and efficient, EVERLIGHT's broad infrared portfolio includes both through-hole and SMD packaged standard and high power emitters, phototransistors and photodiode sensors, reflective and transmissive sensors, infrared LED and couplers.

LED Digital Displays

Wherever and whenever visual information with high brightness at low power consumption is required, EVERLIGHT is your favorite source of first-class LED digital displays. From ultra-sensitive audio electronics to heavy duty industrial equipment displays: Better performance – more choice! Available in through-hole and surface mount packages, the EVERLIGHT product portfolio features one, two, three and four digit, alphanumeric, bar graph and dot matrix displays.

LIGITEKwww.ligitek.com**LED's**

- Superbright
- Blinking
- Low current
- Jumbo
- Cluster
- SMD
- Infrared
- Photo transistor + diode
- LED displays
- Dot Matrix
- Light bar
- Single, double, triple + four digit display



Wireless



www.infineon.com



ISM



www.cinterion.com



Wireless Modules and Terminals GSM/GPRS/EDGE UMTS/HSDPA



www.fastrax.fi



GPS modules

FREE2MOVE

www.free2move.se



Bluetooth, RFID, Wireless LAN



www.gttwireless.com



Cinterion Wireless Modules Integration

- Migration Adaptors
- Mounting Pillars
- Integration Clips

RF Coaxial cable assemblies (M2M)

- U.FL
- SMP
- Fakra
- Semi Rigid Cable Assemblies (*Ultrasonic Soldering*)
- IP67 Rated RF Coaxial Cable Assemblies and connectors

Antenna

- GSM antenna
- GPS antenna
- GSM/GPS combination antenna
- WiFi 802.11 antenna
- UMTS (3G) antenna

IP67 Enclosures

RF Autoswitches



www.redpinesignals.com



Chipsets

Redpine's Lite-Fi>® family of ultra low power Wi-Fi® processors provides unprecedented power profiles for 802.11n. The RS9110 is Redpine's third generation low power product addressing the mobile and portable markets.

The RS9110 uses advanced system-level power management techniques and to reduce power significantly. The RS9110 is packaged in WLCSP and UFLGA. The WLCSP device (0.35mm thickness) enables Micro SD and SiP 802.11n modules for the mobile market.

Redpine's Maxi-Fi® family of high performance single chip 802.11b/g/n SoC chipsets cater to the higher-throughput PC and Access Point market segments. They incorporate Redpine's fourth-generation 802.11 technology, leveraging our vast WLAN patent-portfolio developed over the past eight years, and stand out in wireless performance in adverse environments. The products include the RS9115 2.4 GHz chip with PCI interface, the RS9116 2.4 GHz chip with SDIO and SPI interfaces, the RS9117 dual-band 2.4/5 GHz chip with SDIO and SPI interfaces, and the RS9118 dual-band 2.4/5 GHz chip with PCI, SDIO and SPI interfaces. The Maxi-Fi® BEAM150™ device family complements Redpine Signals' highly successful ultra-low power 802.11n Lite-Fi® device family.

802.11abgn SDIO/SPI(65Mbps)

802.11bgn PCI(150Mbps)

802.11bgn SDIO/SPI(150Mbps)



Modules

Redpine's module products are carefully architected to present optimal solutions to a variety of applications. These modules integrate the 802.11n MAC/BBP, RF, configuration flash, and other required components, resulting in a very low BOM. Separate solutions address varied application-specific requirements; and the modules include a low cost and an ultra-low form factor SDIO/SPI based WLAN client, and a dual-band SDIO/SPI WLAN client. The n-Link products are targeted for high throughput applications with medium or high capacity host processor, while the Connect-io-n modules address the needs of the embedded systems market built around a variety of microcontrollers of all types.

n-Link™

- 802.11bgn (2.4GHz) Module
- 802.11abgn (2.4/5GHz) Module

Connect-io-n™

- Serial-to-WiFi
- 802.11 bgn (2.4GHz) with integrated antenna
- 802.11 bgn (2.4GHz)
- Wireless Device Server
- 802.11 bgn (2.4GHz) with integrated antenna
- 802.11 bgn (2.4GHz)
- 802.11 abgn (2.4/5GHz) with integrated antenna
- 802.11 abgn (2.4/5GHz)
- 802.11n Smart Meter

Wi-Fi™ Systems

Redpine's Lite-Fi® family of ultra low power Wi-Fi® processors provides unprecedented power profiles for 802.11n. The RS9110 is Redpine's third generation low power product addressing the mobile and portable markets.

The RS9110 uses advanced system-level power management techniques and to reduce power significantly. The RS9110 is packaged in WLCSP and UFLGA. The WLCSP device (0.35mm thickness) enables Micro SD and SiP 802.11n modules for the mobile market.

Redpine's Maxi-Fi® family of high performance single chip 802.11b/g/n SoC chipsets cater to the higher-throughput PC and Access Point market segments. They incorporate Redpine's fourth-generation 802.11 technology, leveraging our vast WLAN patent-portfolio developed over the past eight years, and stand out in wireless performance in adverse environments. The products include the RS9115 2.4 GHz chip with PCI interface, the RS9116 2.4 GHz chip with SDIO and SPI interfaces, the RS9117 dual-band 2.4/5 GHz chip with SDIO and SPI interfaces, and the RS9118 dual-band 2.4/5 GHz chip with PCI, SDIO and SPI interfaces. The Maxi-Fi® BEAM150™ device family complements Redpine Signals' highly successful ultra-low power 802.11n Lite-Fi® device family. 802.11n Real Time Location Tag

Batteries

LIFECELL

www.lifecell.hk



- Alkaline batteries
- Super Heavy Duty Batteries
- General Purpose Batteries

AFRIBATT

www.electrocomp.co.za



Sealed Lead Acid Batteries



Enclosures

GAINTA
GAINTA INDUSTRIES LTD

www.gainta.com.tw



- Battery holder & clip
- Snap in plastic cases
- IP67 die-cast aluminium boxes
- Utility box & USB box
- Snap-in plastic box with hinged cover
- Hand-held electronic enclosure
- Hand-held double injection plastic enclosure (G808)
- Die-cast aluminium enclosures
- Flanged die-cast aluminium enclosures
- Controller enclosure
- Key fob enclosure
- Desktop IP54 plastic cases
- Sealed die-cast aluminium enclosures

gtt wireless

www.gttwireless.com



GTT have developed Extreme Environment IP67 RF outdoor die-cast enclosures that enable you to be up and running QUICKLY on your field trials for Outdoor Wireless RF Applications.

We can provide you very quickly with a fully-configured enclosure that allows you to field-trial your product in an outdoor application.

Once you have approved the concept in the field we can further assist you in developing an enclosure specifically for your application through; RF Hardware engineering design, interface-panel tooling design and final unit production. GTT enclosures are IP-67 rated and designed to endure wind loading tests up to 200 km per hour. Bespoke Design Engineering services offered for Outdoor Enclosures includes:

- Antenna Design (*embedded or external*)
- Outdoor Enclosure Panel Mount Interface Design
- IP-Rated Waterproof connector & jumper solutions
- Surge protection connector & jumper solutions
- External Outdoor Low Loss cable assembly solutions
- Internal Enclosure Wire Harness & RF/Data cable assembly planning
- IP Rating verification
- Environmental testing
- Engineering & Tooling Design for plastic or die-cast solutions

Instrumentation

MATRIX

www.szmatrix.com



- Oscilloscopes
- Digital storage oscilloscopes
- Power supplies
- Programmable DC power supplies
- Digitally regulated DC power supplies
- Function generators
- Frequency counters

MAGNUM

www.magnumproducts.co.za



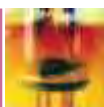
- Soldering irons
- Soldering stations
- Rework stations
- Specialised items

FLUKE

www.fluke.com



- Bench instruments
- Cable testers
- Calibration instruments
- Clamp meters
- Digital multimeters
- Earth ground testers
- Electrical test tools
- Scopemeters
- Thermometers



Solder & Consumables

BALVER ZINN®

www.balverzinn.com



- Solder bars
- Solder wires
- Solder pastes

- Fluxes
- Surface treatment
- Corrosion protection



JOHANNESBURG (*head office*)

Box 1023, Bramley 2018

Cnr. Galaxy Ave. & Electron Str
Linbro Business Park
Sandton

Tel: (011) 458 9000-32
Fax: (011) 458 9034 /5
sales@electrocomp.co.za

PRETORIA

Box 939, Pretoria 0001

Prime Park, Unit 5
Magda Street, Technopark
Centurion

Tel: (012) 665 0138 /40
Fax: (012) 665 0105
nadine@electrocomp.co.za

DURBAN

Box 454, Pinetown 3600

No 4 Block C, Wareing Park
7/9 Caversham Road
Pinetown

Tel: (031) 701 9527
Fax: (031) 702 2603
paul@electrocompkzn.co.za

CAPE TOWN

Unit 9, Sax Centre, Muscat Rd
Saxenburg, Industrial Park
Cape Town

Tel: 021 905 7123
Fax: 021 905 7124
tobie@electrocomp.co.za

www.electrocomp.co.za

LINE CARD

